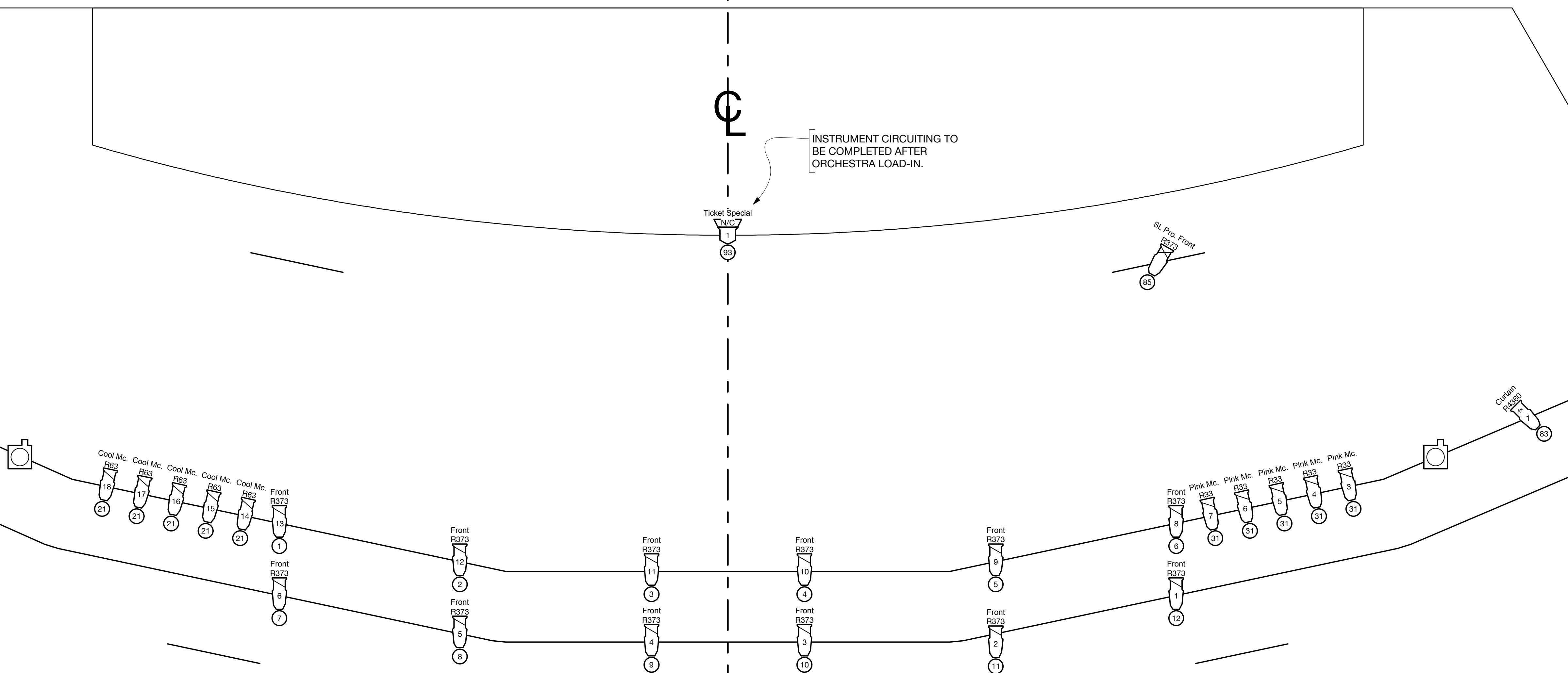
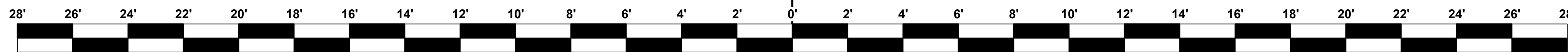
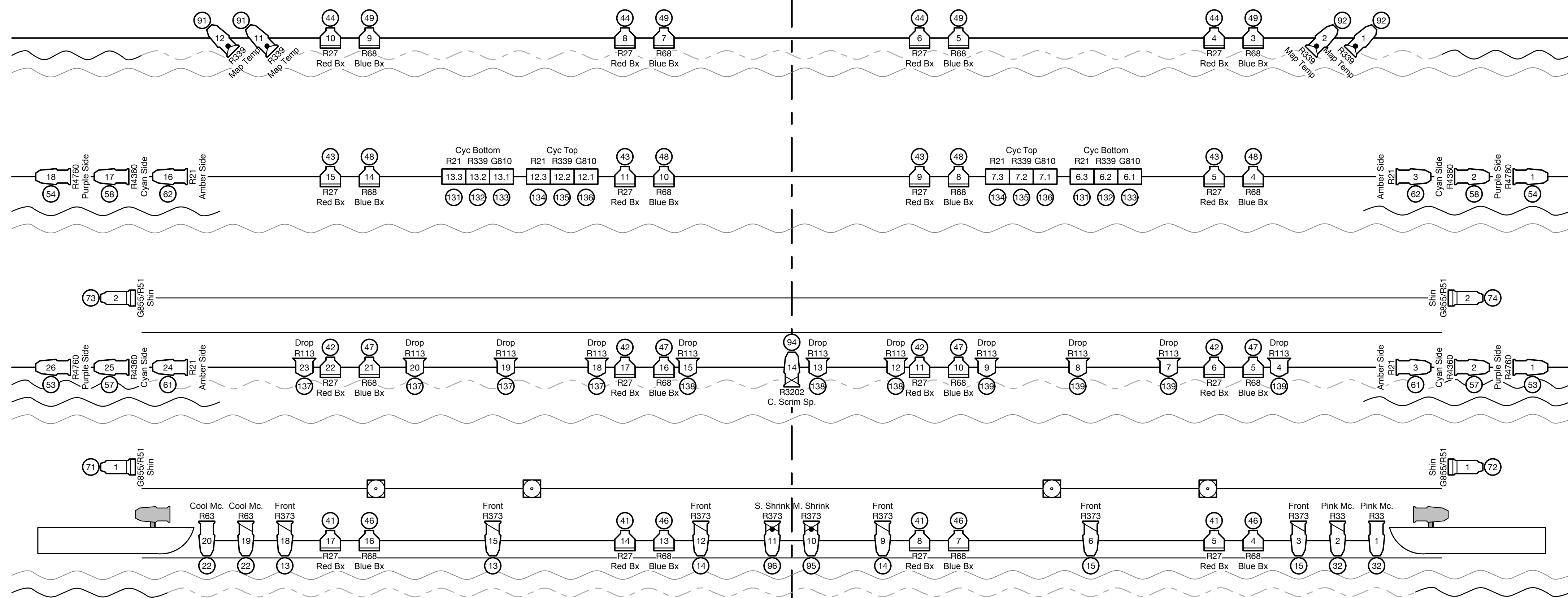
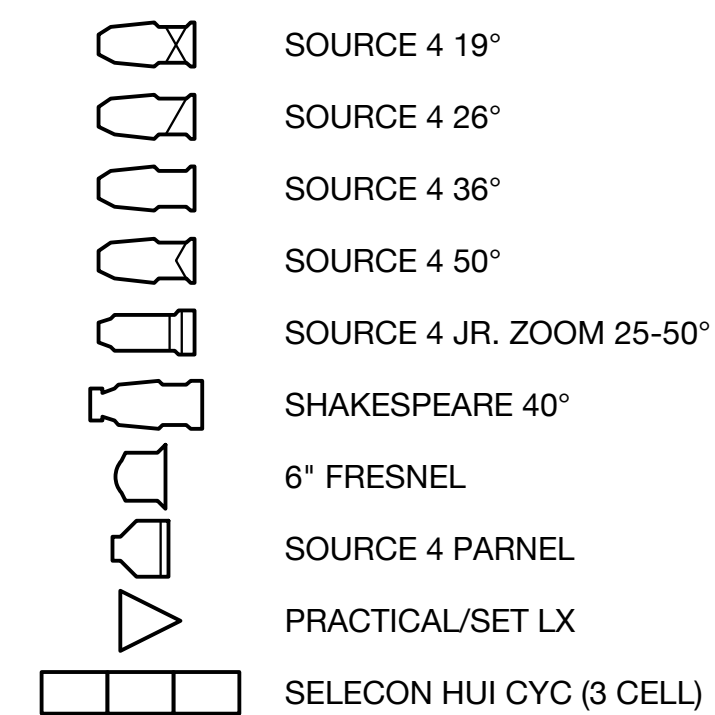


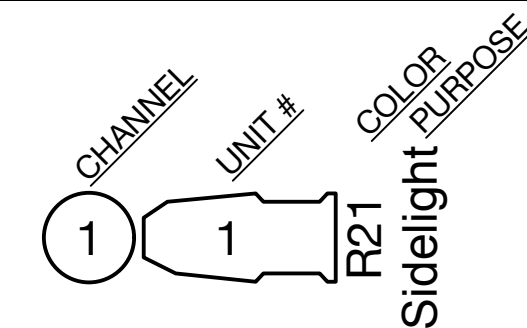
GRID	25'1"	STAR CURTAIN	26
GRID	24'5"	SPARE	25
GRID	23'9"	SPARE	24
22'9"	23'1"	#4 ELECTRIC	23
22'0"	22'5"	UPSTAGE TRAVELER	22
29'6"	21'9"	#4 BORDER	21
GRID	20'5"	#3 ORCHESTRA CLOUDS	20
GRID	19'1"	SPARE	19
21'6"	17'9"	#3 ELECTRIC	18
GRID	17'1"	SPARE	17
22'0"	16'5"	#3 LEGS	10
27'1"	15'9"	#3 BORDER	15
GRID	14'5"	#2 ORCHESTRA CLOUDS	14
21'0"	13'1"	TOWN STREET DROP	12
21'0"	11'9"	BUCKET SHACK DROP	12
22'9"	10'5"	#2 ELECTRIC	11
22'0"	9'9"	MID-STAGE TRAVELER	10
22'0"	9'1"	#2 LEGS	09
27'2"	8'5"	#2 BORDER	08
GRID	7'1"	#1 ORCHESTRA CLOUDS	07
22'0"	5'9"	FIZZY BUBBLES	06
GRID	4'5"	PROJECTION SCREEN	05
22'9"	3'9"	#1 ELECTRIC	04
22'0"	3'1"	FACTORY REVEAL SCRIM	03
31'1"	2'5"	#1 BORDER	02
22'0"	1'9"	FRONT CURTAIN	01
TRIM	ℓ	PURPOSE	#
FIRE POCKET			



INSTRUMENT KEY



TYPICAL



NOTES

- ALL UNITS HUNG ON 1'-6" CENTERS UNLESS OTHERWISE NOTED.
- NO DISPOSITIONS WITHOUT PERMISSION OF THE DESIGNER.
- SUBSTITUTIONS WILL PLACE HAZARD AND RUN DURING FOCUS.
- FOR CLARITY, IT IS SHOWN WITH "HEADRAL" UNITS DRAWN IN ACTUAL PHYSICAL LOCATION. "HEADRAL" UNITS ARE EXPANDED FOR CLARITY, BUT RESIDE DIRECTLY ABOVE THE "HEADRAL" UNITS.
- PLEASE DISCUSS ALL SET ELECTRICS.
- DROP ALL COLOR AND TEMPLATES PRIOR TO FOCUS.
- PLEASE MAKE SURE OF ADEQUATE CLEARANCE FOR ACTORS AS WELL AS SCENERY TO ENTER AND EXIT THE STAGE.
- PLEASE MAKE SURE STAGE MANAGEMENT TO ENSURE ACTORS' EQUITABLE COMPLIANCE WITH REGARDS TO BACKSTAGE BLUE LIGHT.
- ALL BACKLIGHTS ARE TO REMAIN IN REP POSITION AND CIRCUITING.
- ALL FRONTLIGHT, BACKLIGHTS, PIPE END SIDELIGHT, TOWER SIDELIGHT, AND COWE LIGHTS ARE TO REMAIN IN REP POSITION AND CIRCUITING.
- ENSURE ALL STAGEGOODS WILL CLEAR ELECTRICS AND VICE VERSA.
- CYC BOTTOM UNITS TO BE HUNG WITH HARD EDGE FOCUSABLE TO FLOOR-CYC INTERSECTION. PLEASE REVERSE COLOR TO FOLLOW EDGE TO AVOID FOCUSING.
- ALL FOLD-POVS TO BE LOADED WITH R373 AND G835.

THIS DRAWING REPRESENTS DESIGN INTENT AND CONCEPT. THE DRAWINGS AND INFORMATION CONTAINED HEREIN REPRESENT VISUAL CONCEPTS AND CONSTRUCTION SUGGESTIONS ONLY. THE DESIGNER IS UNQUALIFIED TO DETERMINE THE STRUCTURAL APPROPRIATENESS OF THIS DESIGN AND WILL NOT ASSUME RESPONSIBILITY FOR IMPROPER ENGINEERING, ELECTRIFICATION, CONSTRUCTION, HANDLING, OR USE OF THIS SYSTEM. ALL MATERIALS, CONSTRUCTION, AND WIRING THROUGHOUT SHALL COMPLY WITH THE MOST STRINGENT OF FEDERAL, STATE, AND LOCAL FIRE, SAFETY, ELECTRICAL, ENERGY, AND ENVIRONMENTAL CODES.

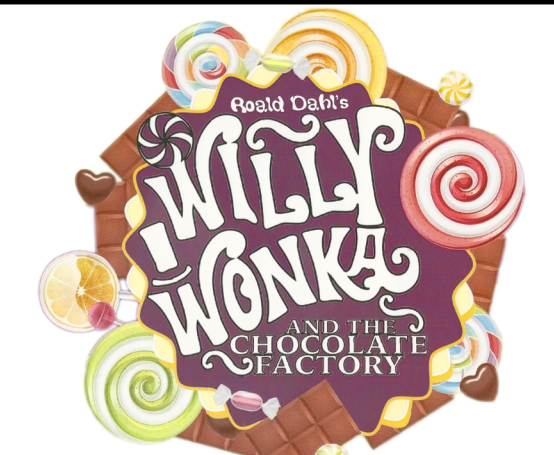
THESE DRAWINGS AND ALL IDEAS INDICATED THEREON OR REPRESENTED HEREBY ARE OWNED BY AND REMAIN THE PROPERTY OF THE LIGHTING DESIGNER AND HAVE BEEN CREATED AND DEVELOPED FOR USE ON, AND IN CONNECTION WITH, THE PROJECT SPECIFIED.

THIS DRAWING IS PREPARED FOR ELECTRICIANS TO UNDERSTAND THE PLACEMENT OF LIGHTING FIXTURES. DO NOT USE THIS DRAWING AS THE ONLY INFORMATION TO LOCATE, BUILD OR HANG SCENERY. CONFIRM THIS INFORMATION WITH SCENIC DEPARTMENT.



JUDSON S. ERNE AUDITORIUM
at Columbus North High School

JUNE 25 THRU 27, 2015



DIRECTOR **CALEB BLACKERBY**
CHOREOGRAPHER **CLAIRE LOGAN**
LIGHTING DESIGNER **PATRICK ANGLE**
TECHNICAL DIRECTOR **HANNAH BOOTH**
PROD. STAGE MANAGER **MEREDITH MORROW**

Patrick Angle
Lighting Design

Patrick Angle
Lighting Designer
www.patrickangletheatrical.com

Columbus, Indiana, USA
Email: pangle@me.com
Phone: (812) 344-7683

LIGHT PLOT

DRAWN: PA

REVISÉ: 6/26/2014

FILE NAME	Willy Wonka - MRP 2015.vwx
-----------	----------------------------

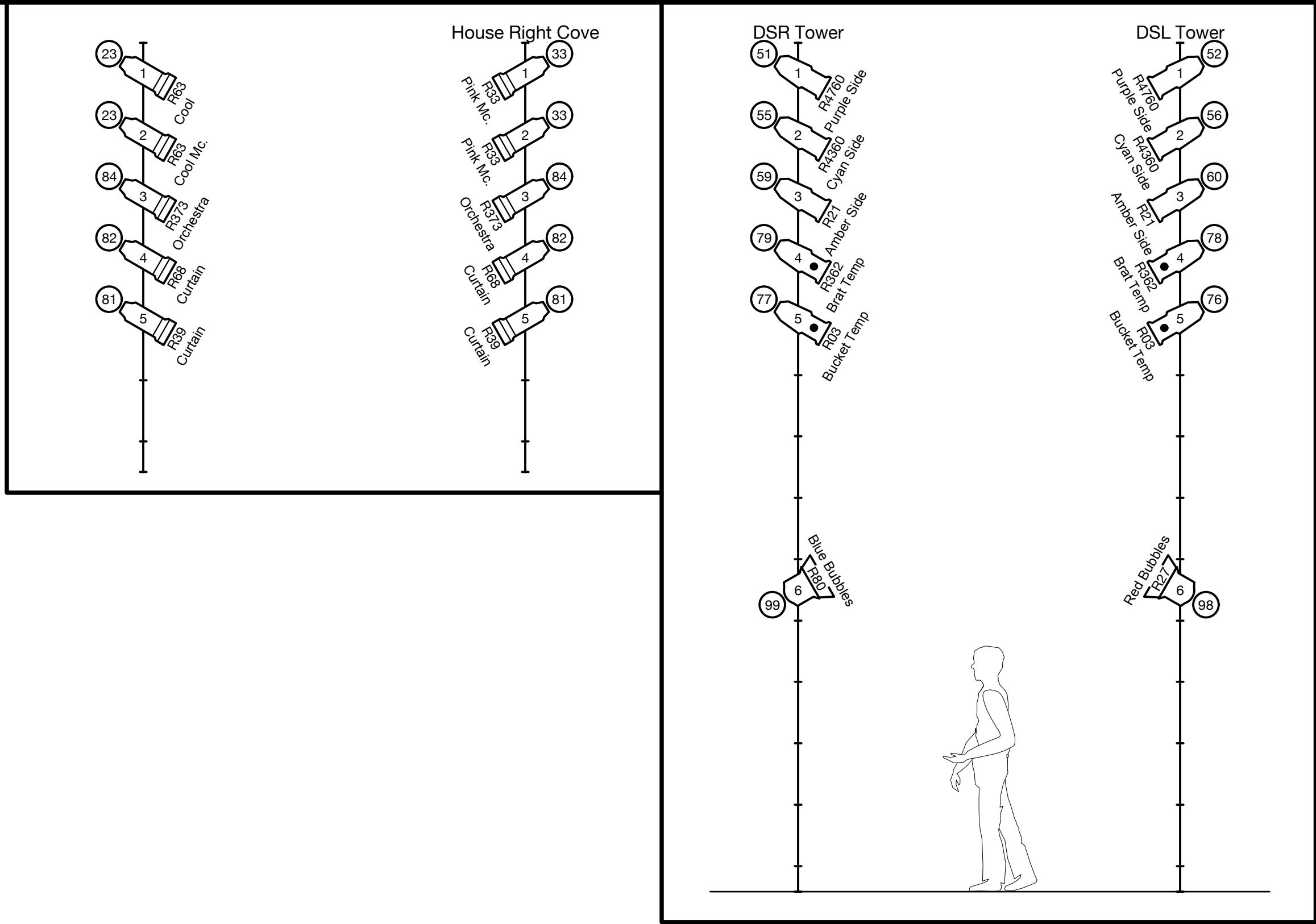
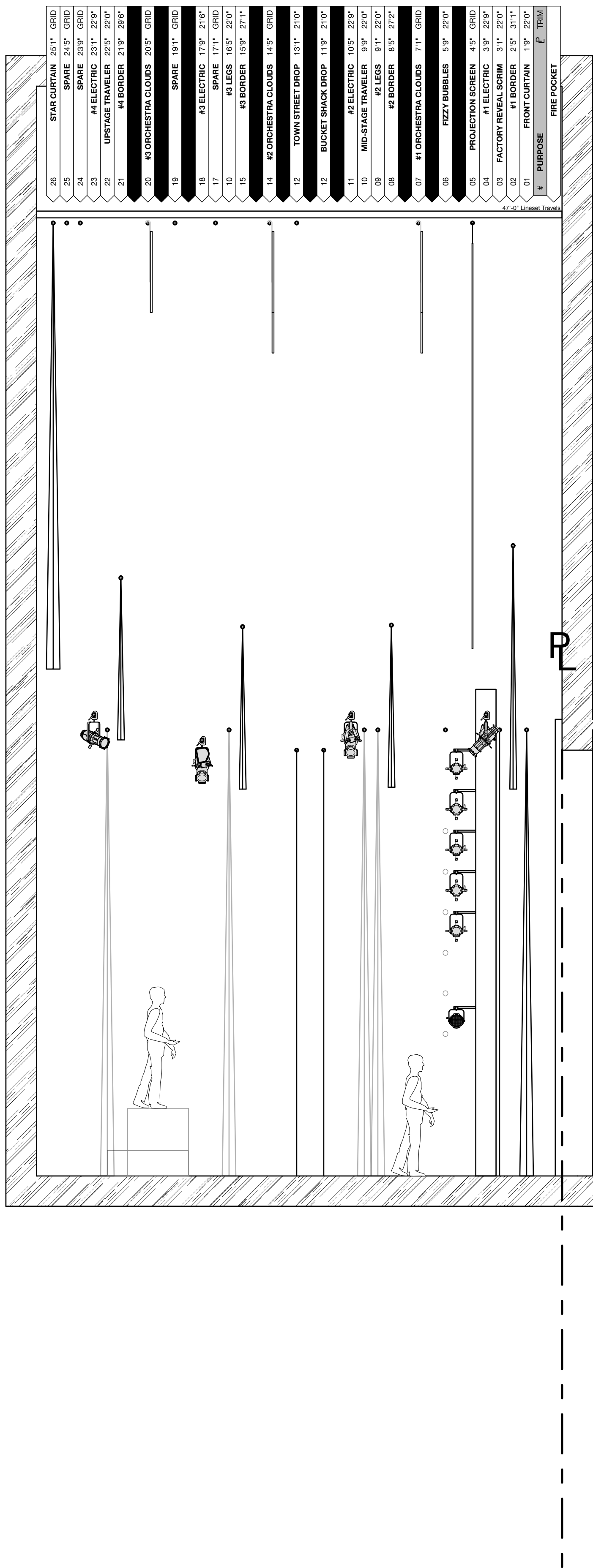
GROUND PLAN

PAPER SIZE: US ARCH D

SCALE: 3/8" = 1'-0"

ATE

OF
TWO



INSTRUMENT KEY

	SOURCE 4 19°
	SOURCE 4 26°
	SOURCE 4 36°
	SOURCE 4 50°
	SOURCE 4 JR. ZOOM 25-50°
	SHAKESPEARE 40°
	6° FRESNEL
	SOURCE 4 PARNELL
	PRACTICAL/SET LX
	SELECON HUI CYC (3 CELL)

TYPICAL

CHANNEL	UNIT #	COLOR	PURPOSE
1	1	R21	Sidelight

NOTES

- ALL UNITS HUNG ON 1'-6" CENTERS UNLESS OTHERWISE NOTED.
- NO SUBSTITUTIONS WITHOUT PERMISSION OF THE DESIGNER.
- DESIGNER WILL PLACE HAZER AND FAN DURING FOCUS.
- FOH CATWALK IS SHOWN WITH "HANDRAIL" UNITS DRAWN IN ACTUAL PHYSICAL LOCATION. "HANDRAIL" UNITS ARE EXPANDED FOR CLARITY, BUT RESIDE DIRECTLY ABOVE THE "HANDRAIL" UNITS.
- PLEASE DISCUSS ALL SET ELECTRICS.
- DROP ALL COLOR AND TEMPLATES PRIOR TO FOCUS.
- PLEASE MAKE SURE OF ADEQUATE CLEARANCE FOR ACTORS AS WELL AS SCENERY TO ENTER AND EXIT THE STAGE.
- PLEASE CONSULT STAGE MANAGEMENT TO ENSURE ACTORS' EQUITY COMPLIANCE WITH REGARDS TO BACKSTAGE BLUE LIGHT.
- ALL BACKLIGHTS ARE TO REMAIN IN REP POSITION AND CIRCUITING.
- ALL FRONTLIGHT, BACKLIGHTS, PIPE END SIDELIGHT, TOWER SIDELIGHT, AND COVE LIGHTS ARE TO REMAIN IN REP POSITION AND CIRCUITING.
- ENSURE ALL SOFTGOODS WILL CLEAR ELECTRICS AND VICE VERSA.
- CYC BOTTOM UNITS TO BE HUNG WITH HARD EDGE FOCUSABLE TO FLOOR-CYC INTERSECTION. PLEASE REVERSE COLOR CARTRIDGE TO ACCOMMODATE.
- ALL FOLLOWSPOTS TO BE LOADED WITH R373 AND G835.

THIS DRAWING REPRESENTS DESIGN INTENT AND CONCEPT. THE DRAWINGS AND INFORMATION CONTAINED HEREIN REPRESENT VISUAL CONCEPTS AND CONSTRUCTION SUGGESTIONS ONLY. THE DESIGNER IS UNQUALIFIED TO DETERMINE THE STRUCTURAL APPROPRIATENESS OF THIS DESIGN AND WILL NOT ASSUME RESPONSIBILITY FOR IMPROPER ENGINEERING, ELECTRIFICATION, CONSTRUCTION, HANDLING, OR USE OF THIS SYSTEM. ALL MATERIALS, CONSTRUCTION, AND WIRING THROUGHOUT SHALL COMPLY WITH THE MOST STRINGENT OF FEDERAL, STATE, AND LOCAL FIRE, SAFETY, ELECTRICAL, ENERGY, AND ENVIRONMENTAL CODES.

THESE DRAWINGS AND ALL IDEAS INDICATED THEREON OR REPRESENTED HEREBY ARE OWNED BY AND REMAIN THE PROPERTY OF THE LIGHTING DESIGNER AND HAVE BEEN CREATED AND DEVELOPED FOR USE ON, AND IN CONNECTION WITH, THE PROJECT SPECIFIED.

THIS DRAWING IS PREPARED FOR ELECTRICIANS TO UNDERSTAND THE PLACEMENT OF LIGHTING FIXTURES. DO NOT USE THIS DRAWING AS THE ONLY INFORMATION TO LOCATE, BUILD OR HANG SCENERY. CONFIRM THIS INFORMATION WITH SCENIC DEPARTMENT.

JUDSON S. ERNE AUDITORIUM
at Columbus North High School
JUNE 25 THRU 27, 2015

DIRECTOR	CALEB BLACKERBY
CHOREOGRAPHER	CLAIRE LOGAN
LIGHTING DESIGNER	PATRICK ANGLE
TECHNICAL DIRECTOR	HANNAH BOOTH
PROD. STAGE MANAGER	MEREDITH MORROW

Patrick Angle

Lighting Design

Patrick Angle
Lighting Designer
www.patrickangletheatrical.com

Columbus, Indiana, USA
Email: pangle@me.com
Phone: (812) 344-7685

LIGHT PLOT

DRAWN: PA	REVISED: 6/26/2014
FILE NAME	Willy Wonka - MRP 2015.vwx
SECTION AND BOOMS	
PAPER SIZE: US ARCH D	
SCALE: 3/8" = 1'-0"	

PLATE

2

OF TWO