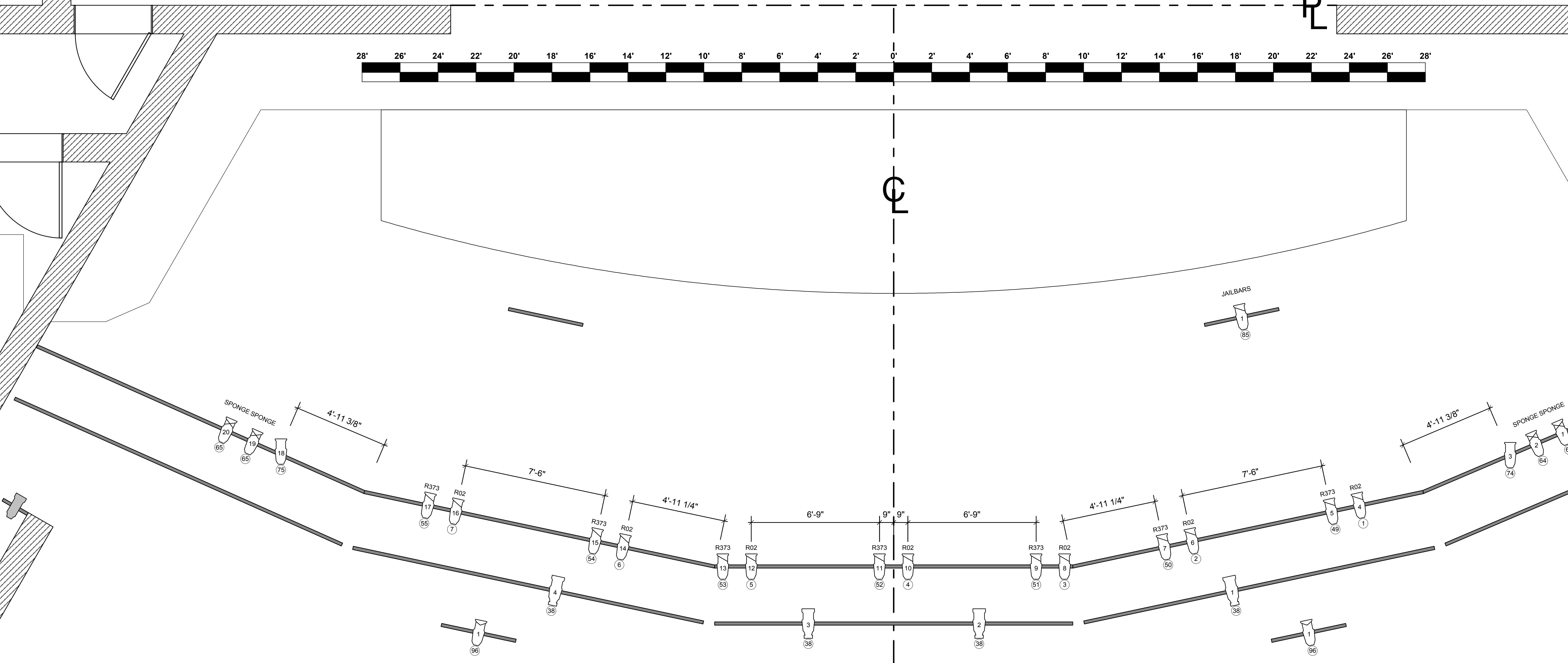
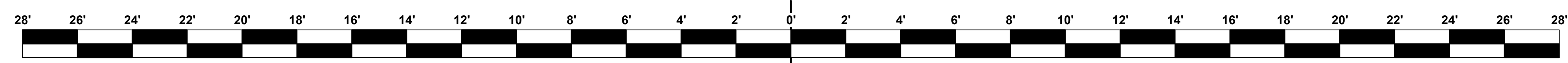
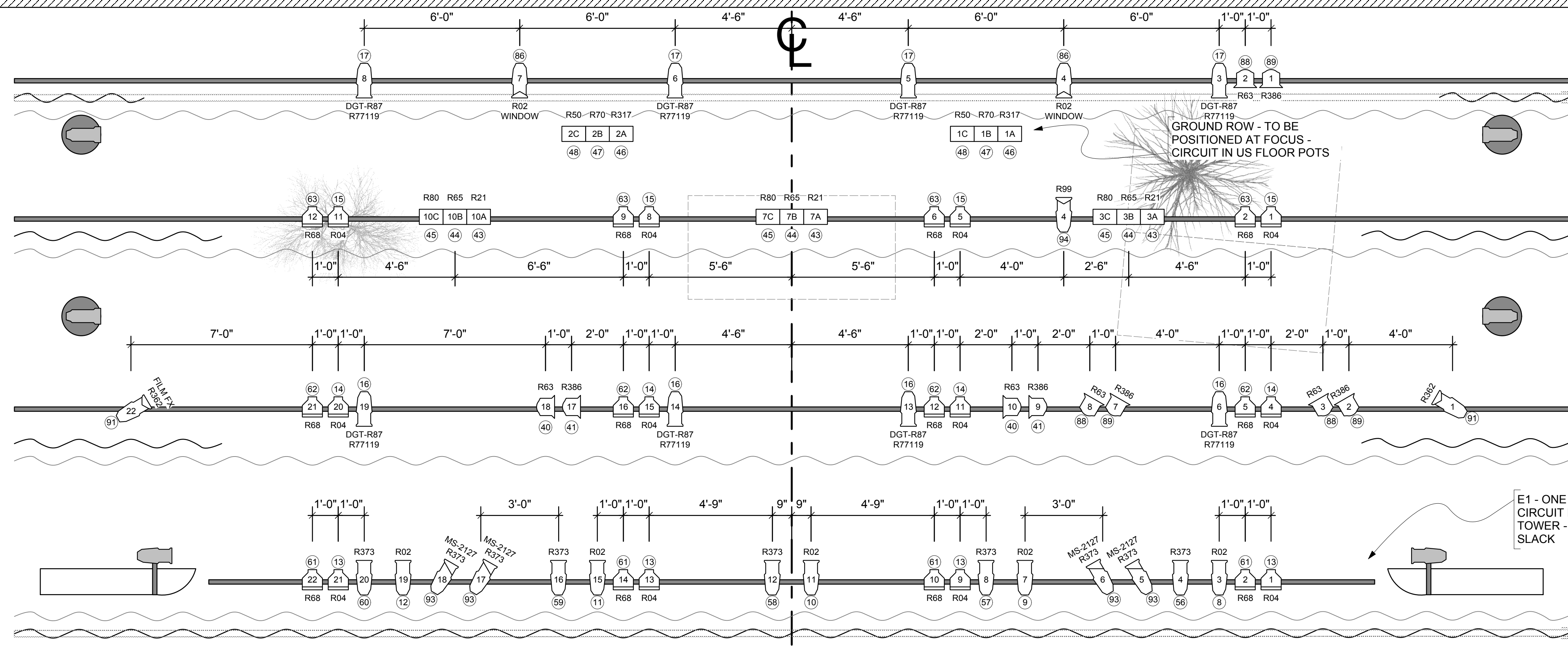


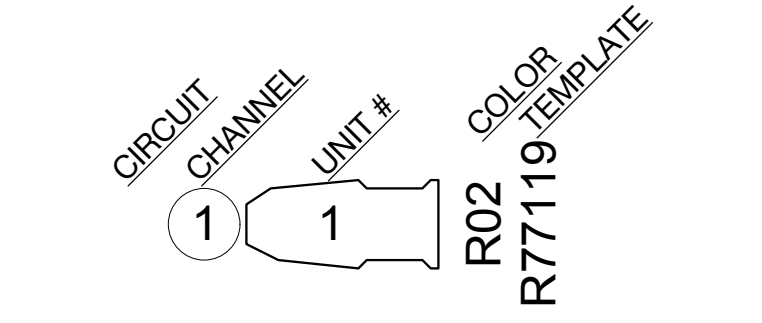
25' 1" STAR CURTAIN	26
24' 5" -	25
23' 9" -	24
23' 1" 4TH ELECTRIC	23
22' 5" REAR CURTAIN	22
21' 9" BORDER 3	21
20' 5" ORCHESTRA CLOUDS 3	20
19' 1" -	19
17' 9" 3RD ELECTRIC	18
17' 1" LEGS 3	17
16' 5" BORDER 2	16
15' 9" TOAD HALL EXTERIOR	15
14' 5" ORCHESTRA CLOUDS 2	14
13' 1" TOAD HALL US INTERIOR	13
11' 9" WILD WOODS US	12
10' 5" 2ND ELECTRIC	11
9' 9" INTERMISSION CURTAIN	10
9' 1" LEGS 2	09
8' 5" BORDER 1	08
7' 1" WILD WOODS DS	07
5' 9" JAILHOUSE WALL	06
4' 5" PROJECTION SCREEN	05
3' 9" 1ST ELECTRIC	04
3' 1" TOAD HALL DS INTERIOR	03
2' 5" GRAND DRAPE	02
1' 9" FRONT CURTAIN	01
P PURPOSE	#



INSTRUMENT KEY

- SOURCE 4 19°
- SOURCE 4 26°
- SOURCE 4 36°
- SOURCE 4 50°
- SOURCE 4 JR. ZOOM 25-50°
- SHAKESPEARE 40°
- 6° FRESNEL
- SOURCE 4 PARNEL
- PRACTICAL/SET LX
- HUI CYC (3 CELL)

TYPICAL



NOTES

- ALL UNITS HUNG ON 1'-6" CENTERS UNLESS OTHERWISE NOTED.
- NO SUBSTITUTIONS WITHOUT PERMISSION OF THE DESIGNER.
- DESIGNER WILL PLACE HAZER AND FAN DURING FOCUS.
- FOH CATWALK IS SHOWN WITH "HANDRAIL" UNITS DRAWN IN ACTUAL PHYSICAL LOCATION. "HANDRAIL" UNITS ARE EXPANDED FOR CLARITY, BUT RESIDE DIRECTLY ABOVE THE "HANDRAIL" UNITS.
- PLEASE DISCUSS ALL SET ELECTRICS.
- DROP ALL COLOR AND TEMPLATES PRIOR TO FOCUS.
- PLEASE MAKE SURE OF ADEQUATE CLEARANCE FOR ACTORS AS WELL AS SCENERY TO ENTER AND EXIT THE STAGE.
- THEATRE HOUSE STAFF TO PROVIDE WORKLIGHT AND BACKSTAGE BLUE LIGHT AS NEEDED.
- PLEASE NOTE THAT THIS PLOT INCLUDES LIGHTING BOOMS IN THE 3RD AND 4TH WINGS, AND ASSOCIATED CABLE. ALL SCENIC ELEMENTS ON WHEELS WILL NOT BE ABLE TO TRAVEL OVER CABLE IN THESE WINGS.

THIS DRAWING REPRESENTS DESIGN INTENT AND CONCEPT. THE DRAWINGS AND INFORMATION CONTAINED HEREIN REPRESENT VISUAL CONCEPTS AND CONSTRUCTION SUGGESTIONS ONLY. THE DESIGNER IS UNQUALIFIED TO DETERMINE THE STRUCTURAL APPROPRIATENESS OF THIS DESIGN AND WILL NOT ASSUME RESPONSIBILITY FOR IMPROPER ENGINEERING, ELECTRIFICATION, CONSTRUCTION, HANDLING, OR USE OF THIS SYSTEM. ALL MATERIALS, CONSTRUCTION, AND WIRING THROUGHOUT SHALL COMPLY WITH THE MOST STRINGENT OF FEDERAL, STATE, AND LOCAL FIRE AND SAFETY CODES.

THESE DRAWINGS AND ALL IDEAS INDICATED THEREON OR REPRESENTED HEREBY ARE OWNED BY AND REMAIN THE PROPERTY OF THE LIGHTING DESIGNER AND HAVE BEEN CREATED AND DEVELOPED FOR USE ON ONE CONNECTION WITH THE PROJECT SPECIFIED.

THIS DRAWING IS PREPARED FOR ELECTRICIANS TO UNDERSTAND THE PLACEMENT OF LIGHTING FIXTURES. DO NOT USE THIS DRAWING AS THE ONLY INFORMATION TO LOCATE, BUILD OR HANG SCENERY. CONFIRM THIS INFORMATION WITH SCENIC DEPARTMENT.

MILL RACE PLAYERS

JUDSON S. ERNE AUDITORIUM
JULY 11 THRU 13, 2014



DIRECTOR: CAITLIN SMITH
SCENIC DESIGNER: JILLIAN KELLER
COSTUME DESIGNER: COURTNEE JANIKOWSKI
LIGHTING DESIGNER: PATRICK ANGLE
TECHNICAL DIRECTOR: AKIA HILDERBRAND
PROD. STAGE MANAGER: HANNAH BOOTH

Patrick Angle
Lighting Design

Patrick Angle
Lighting Designer
www.pangle.me

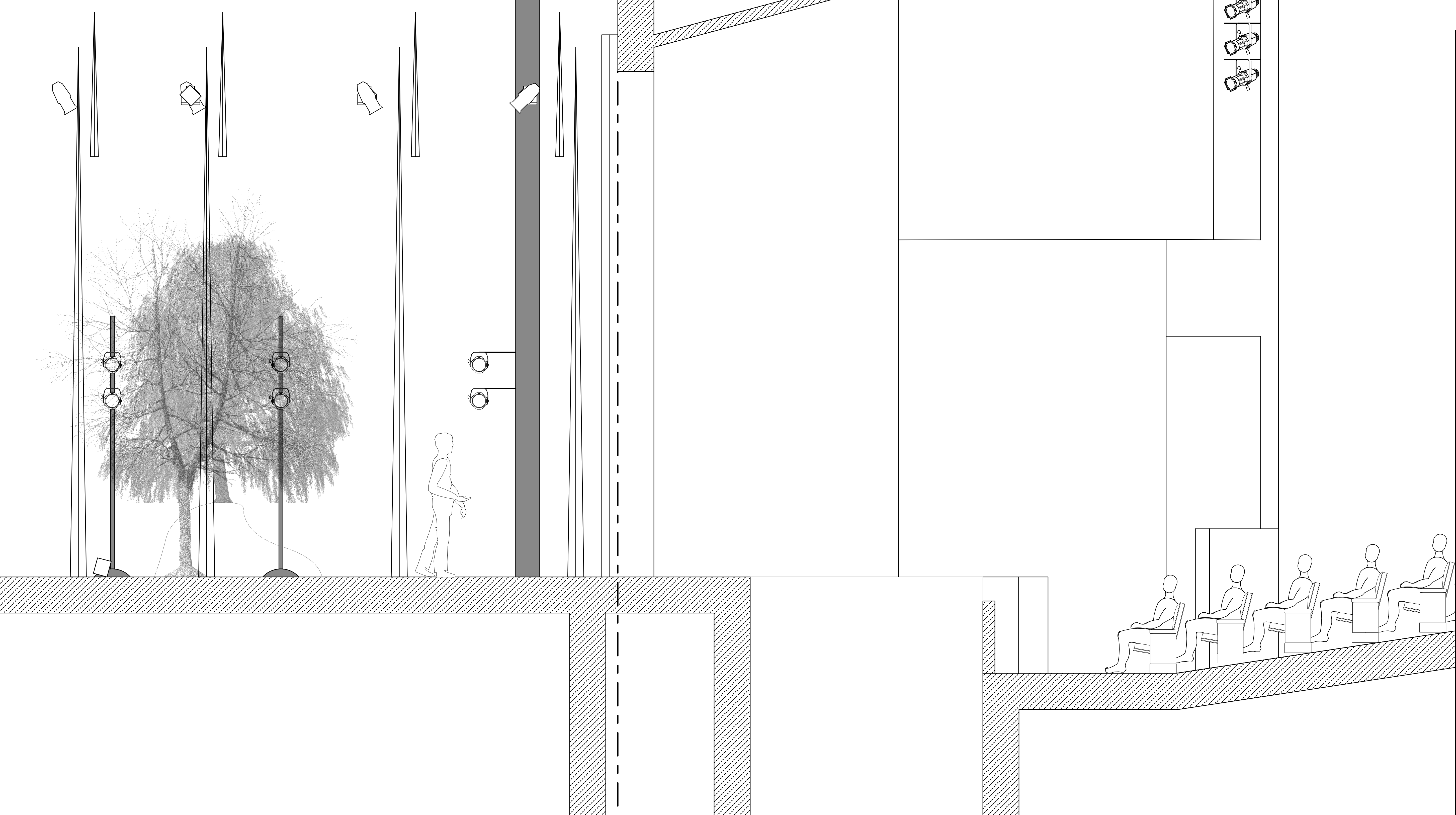
Columbus, Indiana, USA
Email: pangle@me.com
Phone: (812) 344-7685

LIGHT PLOT

DRAWN: PA	REVISED: 6/26/2014
FILE NAME: Wind in the Willows.vwx	
GROUND PLAN	PLATE 1 OF THREE
PAPER SIZE: US ARCH D	
SCALE: 3/8" = 1'-0"	

26	STAR CURTAIN	25' 1"
25	-	24' 5"
24	-	23' 9"
23	4TH ELECTRIC	23' 1"
22	REAR CURTAIN	22' 5"
21	BORDER 3	21' 9"
20	ORCHESTRA CLOUDS 3	20' 5"
19	-	19' 1"
18	3RD ELECTRIC	17' 9"
17	LEGS 3	17' 1"
16	BORDER 2	16' 5"
15	TOAD HALL EXTERIOR	15' 9"
14	ORCHESTRA CLOUDS 2	14' 5"
13	TOAD HALL US INTERIOR	13' 1"
12	WILD WOODS US	11' 9"
11	2ND ELECTRIC	10' 5"
10	INTERMISSION CURTAIN	9' 9"
09	LEGS 2	9' 1"
08	BORDER 1	8' 5"
07	WILD WOODS DS	7' 1"
06	JAILHOUSE WALL	5' 9"
05	PROJECTION SCREEN	4' 5"
04	1ST ELECTRIC	3' 9"
03	TOAD HALL DS INTERIOR	3' 1"
02	GRAND DRAPE	2' 5"
01	FRONT CURTAIN	1' 9"
#	PURPOSE	P

FIRE POCKET



NOTES

- ALL UNITS HUNG ON 1'-6" CENTERS UNLESS OTHERWISE NOTED.
- NO SUBSTITUTIONS WITHOUT PERMISSION OF THE DESIGNER.
- DESIGNER WILL PLACE HAZER AND FAN DURING FOCUS.
- FOH CATWALK IS SHOWN WITH "HANDRAIL" UNITS DRAWN IN ACTUAL PHYSICAL LOCATION. "HANDRAIL" UNITS ARE EXPANDED FOR CLARITY, BUT RESIDE DIRECTLY ABOVE THE "HANDRAIL" UNITS.
- PLEASE DISCUSS ALL SET ELECTRICS.
- DROP ALL COLOR AND TEMPLATES PRIOR TO FOCUS.
- PLEASE MAKE SURE OF ADEQUATE CLEARANCE FOR ACTORS AS WELL AS SCENERY TO ENTER AND EXIT THE STAGE.
- THEATRE HOUSE STAFF TO PROVIDE WORKLIGHT AND BACKSTAGE BLUE LIGHT AS NEEDED.
- PLEASE NOTE THAT THIS PLOT INCLUDES LIGHTING BOOMS IN THE 3RD AND 4TH WINGS, AND ASSOCIATED CABLE. ALL SCENIC ELEMENTS ON WHEELS WILL NOT BE ABLE TO TRAVEL OVER CABLE IN THESE WINGS.

THIS DRAWING REPRESENTS DESIGN INTENT AND CONCEPT. THE DRAWINGS AND INFORMATION CONTAINED HEREIN REPRESENT VISUAL CONCEPTS AND CONSTRUCTION SUGGESTIONS ONLY. THE DESIGNER IS UNQUALIFIED TO DETERMINE THE STRUCTURAL APPROPRIATENESS OF THIS DESIGN AND WILL NOT ASSUME RESPONSIBILITY FOR IMPROPER ENGINEERING, ELECTRIFICATION, CONSTRUCTION, HANDLING, OR USE OF THIS SYSTEM. ALL MATERIALS, CONSTRUCTION, AND WIRING THROUGHOUT SHALL COMPLY WITH THE MOST STRINGENT OF FEDERAL, STATE, AND LOCAL FIRE AND SAFETY CODES.

THESE DRAWINGS AND ALL IDEAS INDICATED THEREON OR REPRESENTED HEREBY ARE OWNED BY AND REMAIN THE PROPERTY OF THE LIGHTING DESIGNER AND HAVE BEEN CREATED AND DEVELOPED FOR USE ON, AND IN CONNECTION WITH, THE PROJECT SPECIFIED.

THIS DRAWING IS PREPARED FOR ELECTRICIANS TO UNDERSTAND THE PLACEMENT OF LIGHTING FIXTURES. DO NOT USE THE DRAWING AS THE ONLY INFORMATION TO LOCATE, BUILD OR HANG SCENERY. CONFIRM THIS INFORMATION WITH SCENIC DEPARTMENT.

MILL RACE PLAYERS

JUDSON S. ERNE AUDITORIUM
JULY 11 THRU 13, 2014



DIRECTOR: CAITLIN SMITH
SCENIC DESIGNER: JILLIAN KELLER
COSTUME DESIGNER: COURTNE JANIKOWSKI
LIGHTING DESIGNER: PATRICK ANGLE
TECHNICAL DIRECTOR: AKIA HILDERBRAND
PROD. STAGE MANAGER: HANNAH BOOTH

Patrick Angle Lighting Design

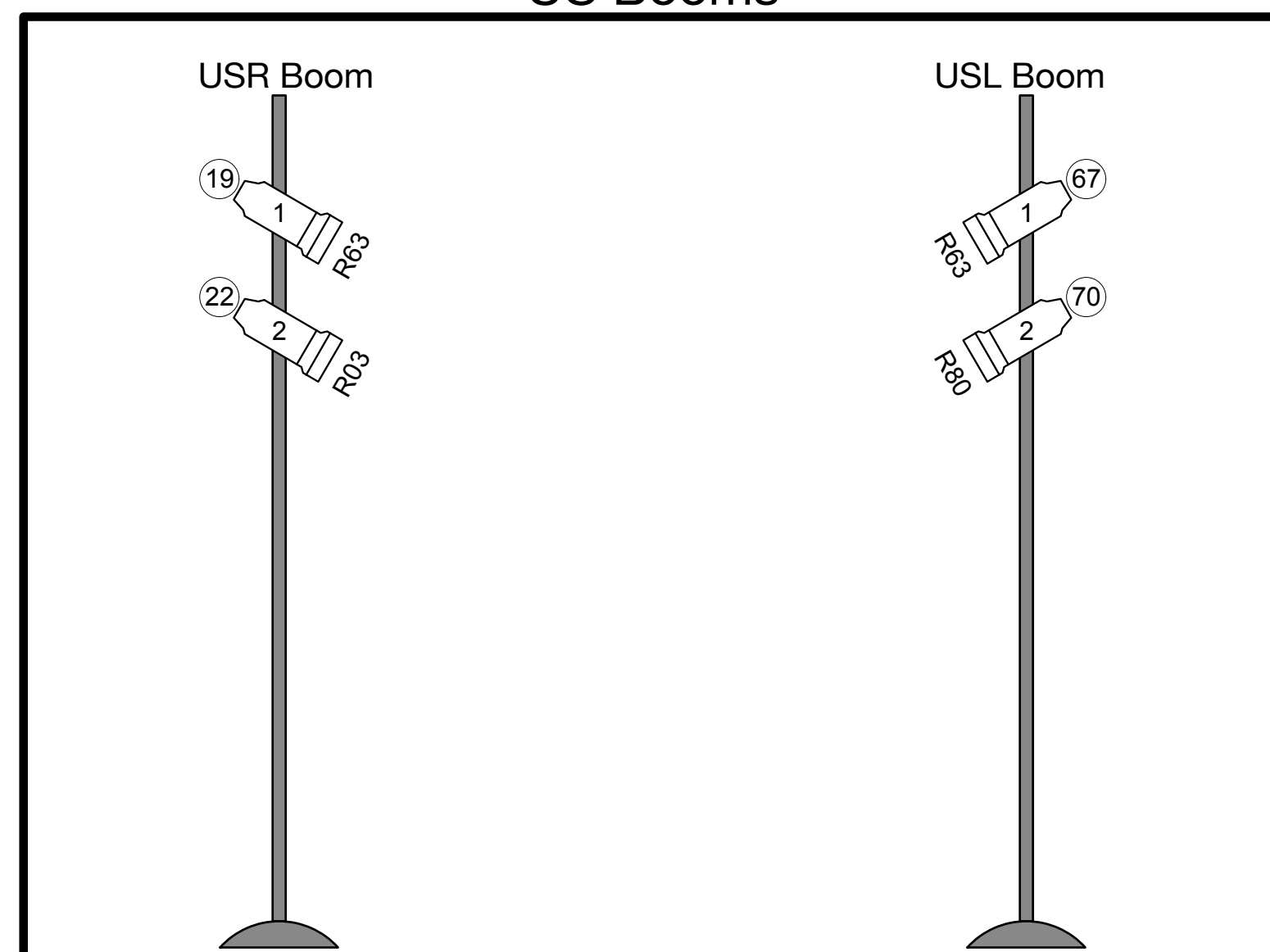
Patrick Angle
Lighting Designer
www.pangle.me
Columbus, Indiana, USA
Email: pangle@me.com
Phone: (812) 344-7685

LIGHT PLOT

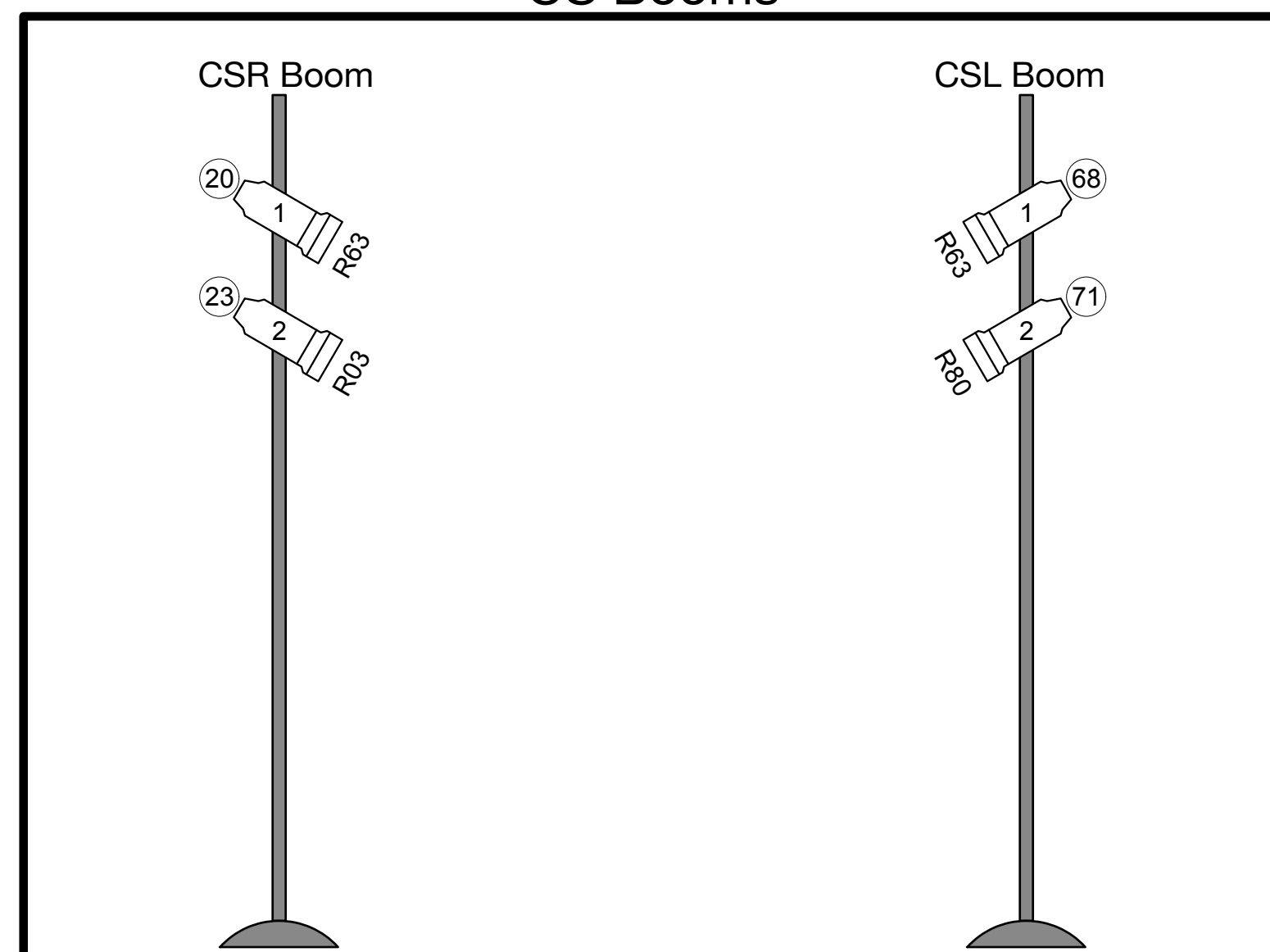
DRAWN: PA	REVISED: 6/26/2014
FILE NAME: Wind in the Willows.vwx	
CENTERLINE SECTION	
PAPER SIZE: US ARCH D	
SCALE: 1/2" = 1'-0"	

PLATE 2 OF THREE

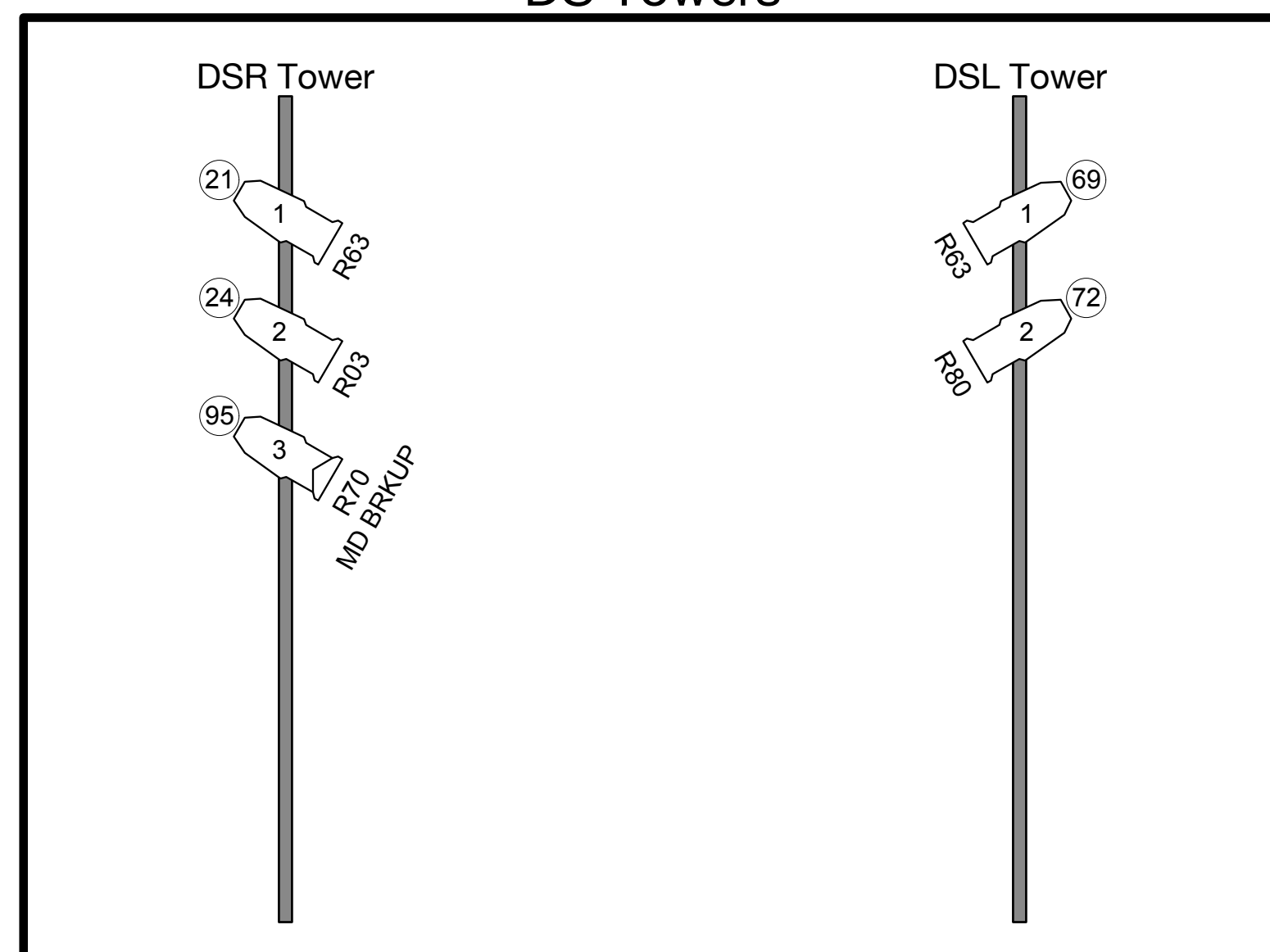
US Booms



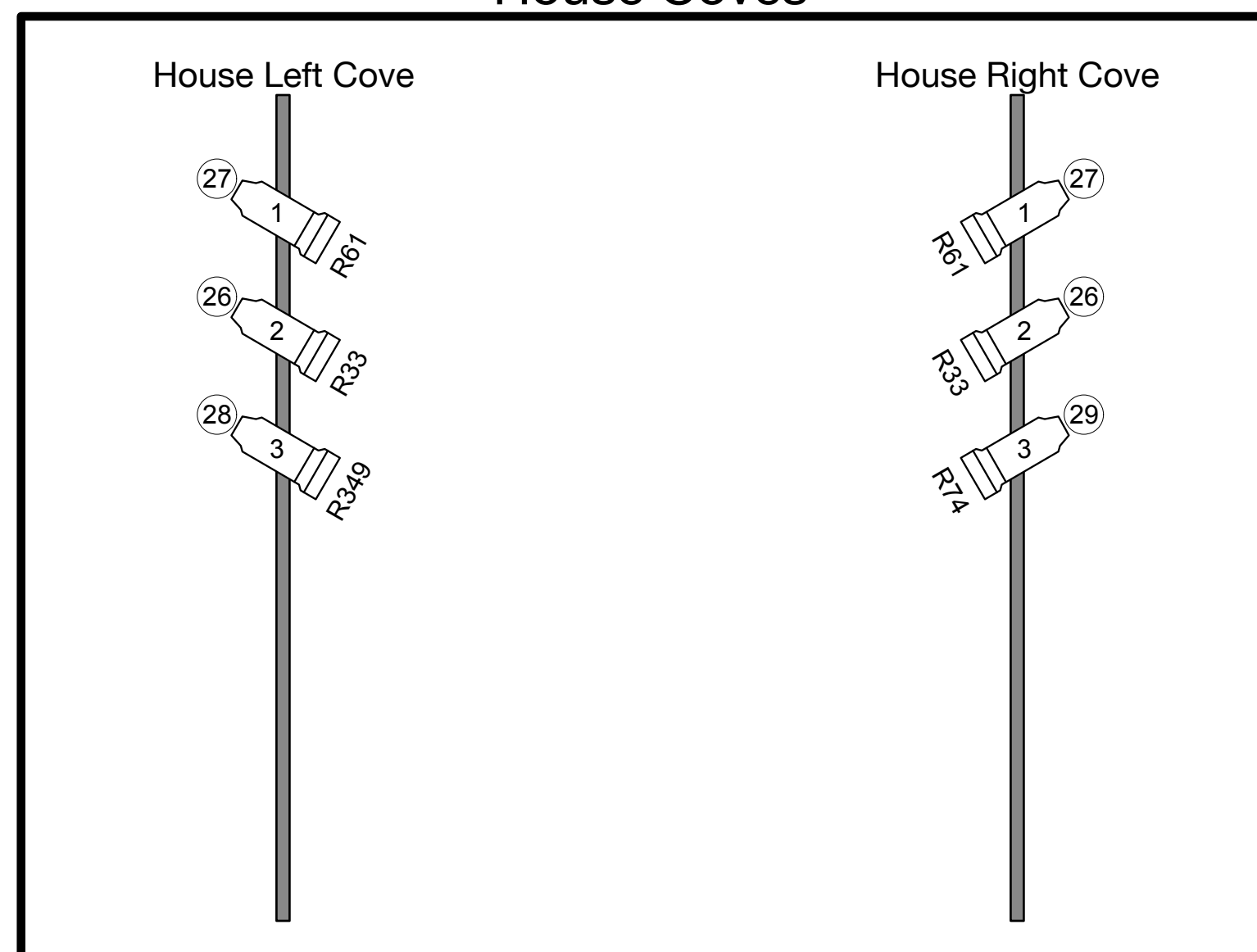
CS Booms



DS Towers



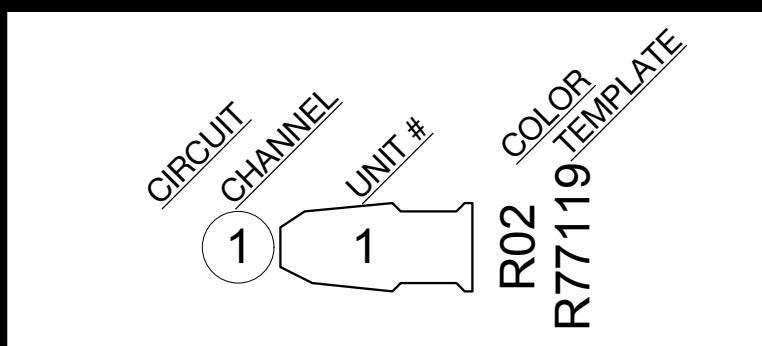
House Coves



INSTRUMENT KEY

- SOURCE 4 19°
- SOURCE 4 26°
- SOURCE 4 36°
- SOURCE 4 50°
- SOURCE 4 JR. ZOOM 25-50°
- SHAKESPEARE 40°
- 6° FRESNEL
- SOURCE 4 PARNEL
- PRACTICAL/SET LX
- HUI CYC (3 CELL)

TYPICAL



NOTES

- ALL UNITS HUNG ON 1'-6" CENTERS UNLESS OTHERWISE NOTED.
- NO SUBSTITUTIONS WITHOUT PERMISSION OF THE DESIGNER.
- DESIGNER WILL PLACE HAZER AND FAN DURING FOCUS.
- FOH CATWALK IS SHOWN WITH "HANDRAIL" UNITS DRAWN IN ACTUAL PHYSICAL LOCATION. "HANDRAIL" UNITS ARE EXPANDED FOR CLARITY, BUT RESIDE DIRECTLY ABOVE THE "HANDRAIL" UNITS.
- PLEASE DISCUSS ALL SET ELECTRICS.
- DROP ALL COLOR AND TEMPLATES PRIOR TO FOCUS.
- PLEASE MAKE SURE OF ADEQUATE CLEARANCE FOR ACTORS AS WELL AS SCENERY TO ENTER AND EXIT THE STAGE.
- THEATRE HOUSE STAFF TO PROVIDE WORKLIGHT AND BACKSTAGE BLUE LIGHT AS NEEDED.
- PLEASE NOTE THAT THIS PLOT INCLUDES LIGHTING BOOMS IN THE 3RD AND 4TH WINGS, AND ASSOCIATED CABLE. ALL SCENIC ELEMENTS ON WHEELS WILL NOT BE ABLE TO TRAVEL OVER CABLE IN THESE WINGS.

THIS DRAWING REPRESENTS DESIGN INTENT AND CONCEPT. THE DRAWINGS AND INFORMATION CONTAINED HEREIN REPRESENT VISUAL CONCEPTS AND CONSTRUCTION SUGGESTIONS ONLY. THE DESIGNER IS UNQUALIFIED TO DETERMINE THE STRUCTURAL APPROPRIATENESS OF THIS DESIGN AND WILL NOT ASSUME RESPONSIBILITY FOR IMPROPER ENGINEERING, ELECTRIFICATION, CONSTRUCTION, HANDLING, OR USE OF THIS SYSTEM. ALL MATERIALS, CONSTRUCTION, AND WIRING THROUGHOUT SHALL COMPLY WITH THE MOST STRINGENT OF FEDERAL, STATE, AND LOCAL FIRE AND SAFETY CODES.

THESE DRAWINGS AND ALL IDEAS INDICATED THEREON OR REPRESENTED HEREBY ARE OWNED BY AND REMAIN THE PROPERTY OF THE LIGHTING DESIGNER AND HAVE BEEN CREATED AND DEVELOPED FOR USE ON AND IN CONNECTION WITH THE PROJECT SPECIFIED.

THIS DRAWING IS PREPARED FOR ELECTRICIANS TO UNDERSTAND THE PLACEMENT OF LIGHTING FIXTURES. DO NOT USE THIS DRAWING AS THE ONLY INFORMATION TO LOCATE, BUILD OR HANG SCENERY. CONFIRM THIS INFORMATION WITH SCENIC DEPARTMENT.

MILL RACE PLAYERS

JUDSON S. ERNE AUDITORIUM
JULY 11 THRU 13, 2014



DIRECTOR: CAITLIN SMITH
SCENIC DESIGNER: JILLIAN KELLER
COSTUME DESIGNER: COURTNIIE JANIKOWSKI
LIGHTING DESIGNER: PATRICK ANGLE
TECHNICAL DIRECTOR: AKIA HILDERBRAND
PROD. STAGE MANAGER: HANNAH BOOTH

Patrick Angle Lighting Design

Patrick Angle
Lighting Designer
www.pangle.me
Columbus, Indiana, USA
Email: pangle@me.com
Phone: (812) 344-7685

LIGHT PLOT

DRAWN: PA REVISED: 6/26/2014

FILE NAME: Wind in the Willows.vwx

BOOM DETAIL
PAPER SIZE: US ARCH D
SCALE: 1/2" = 1'-0"

PLATE 3 OF THREE